

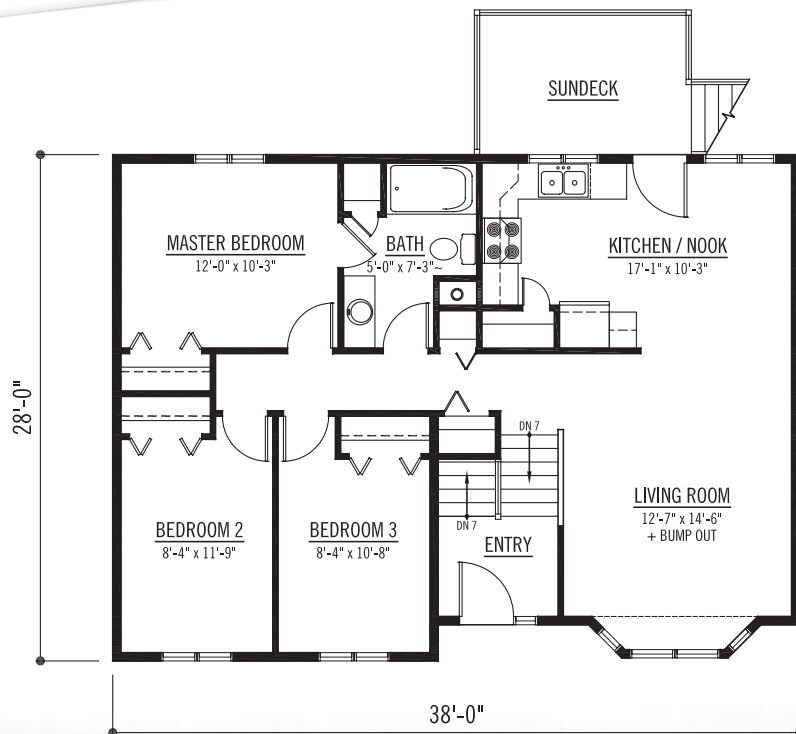
# The Poplar Grove



## The Poplar Grove

SQ. FT: 1038 House  
Width: 38'-0"  
Depth: 28'-0"

Notes: Available on  
crawlspce,  
slab-on-grade  
or basement.



**Contact us today.**

PH: 1-888-296-8059  
EM: homes@wintonglobal.com  
WB: www.wintonglobal.com

