

# The Chilcotin

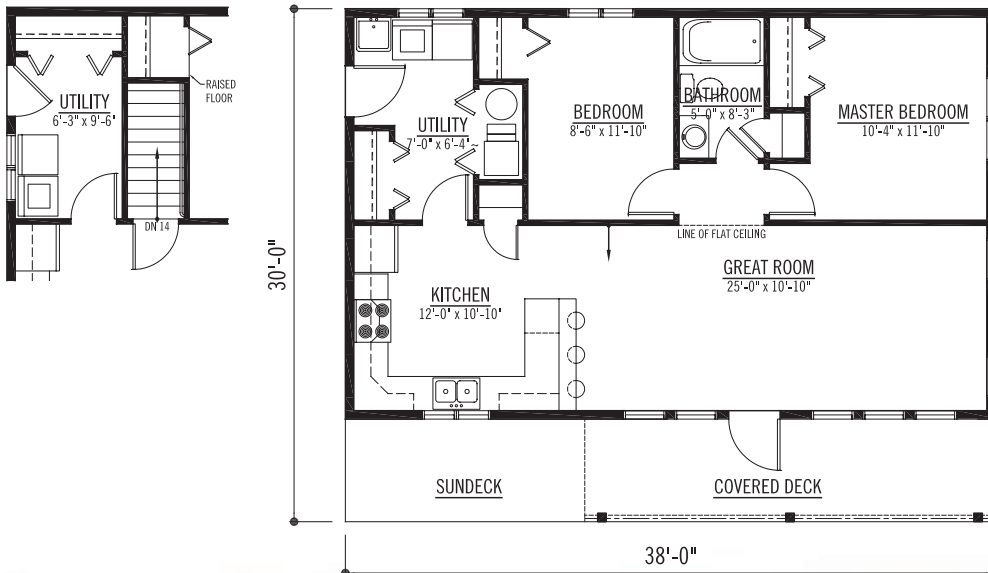


## The Chilcotin

SQ. FT: 912 House  
Width: 38'-0"  
Depth: 30'-0"

Notes: Available on  
crawl space,  
slab-on-grade  
or basement.

### BASEMENT OPTION



**Contact us today.**

PH: 1-888-296-8059  
EM: [homes@wintonglobal.com](mailto:homes@wintonglobal.com)  
WB: [www.wintonglobal.com](http://www.wintonglobal.com)

