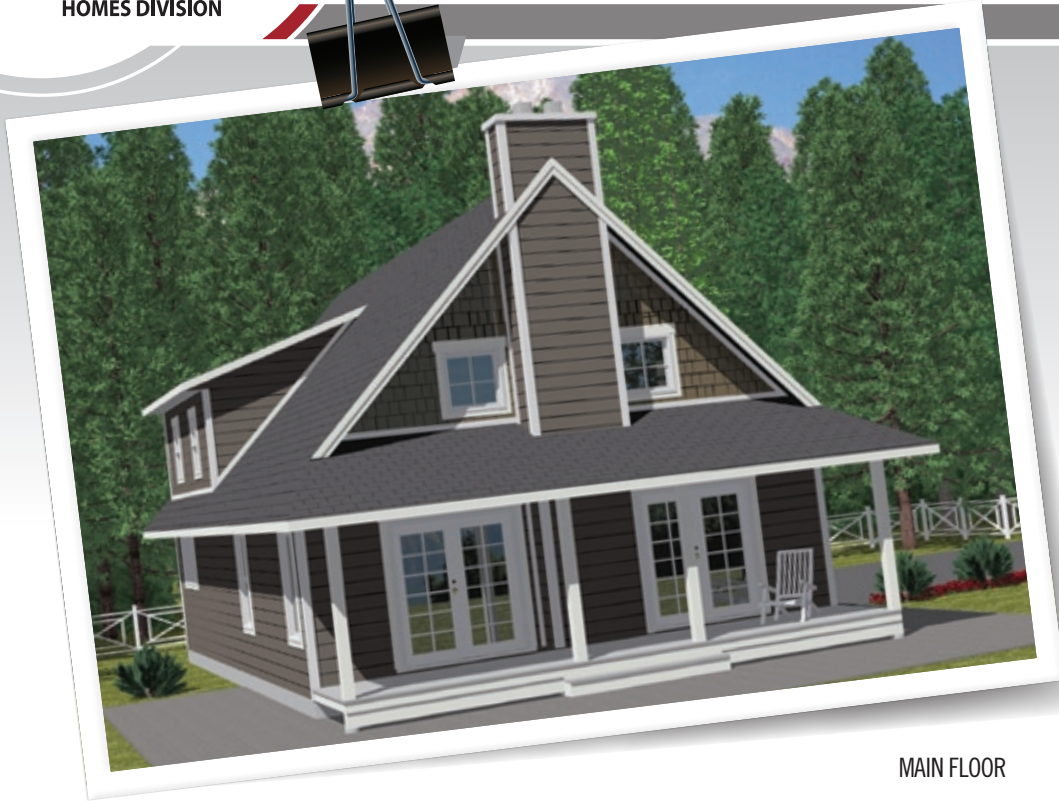


The Kootenay



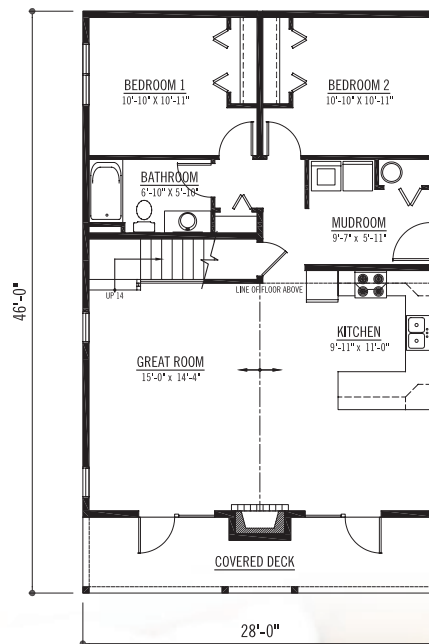
The Kootenay

SQ. FT: 1120 Main
554 Loft
1654 Total

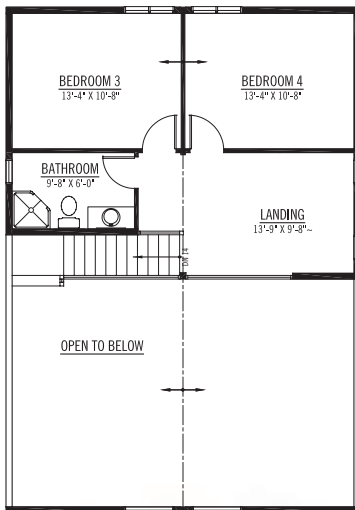
Width: 28'-0"
Depth: 46'-0"

Notes: Available on
crawlspce,
slab-on-grade
or basement.

MAIN FLOOR



LOFT



Contact us today.

PH: 1-888-296-8059
EM: homes@wintonglobal.com
WB: www.wintonglobal.com

