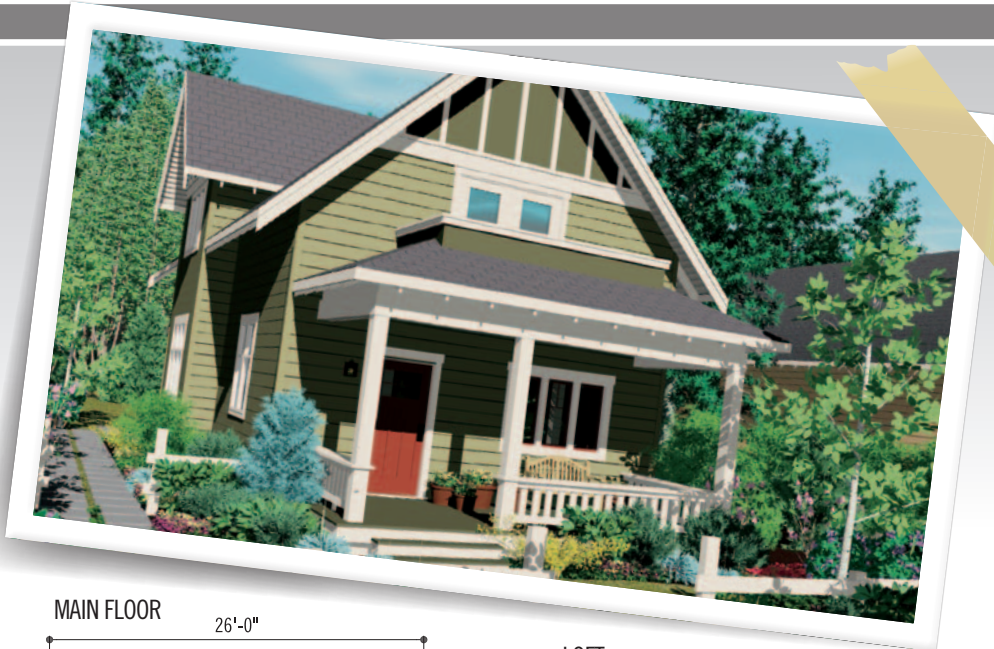


The Dogwood



HOMES DIVISION

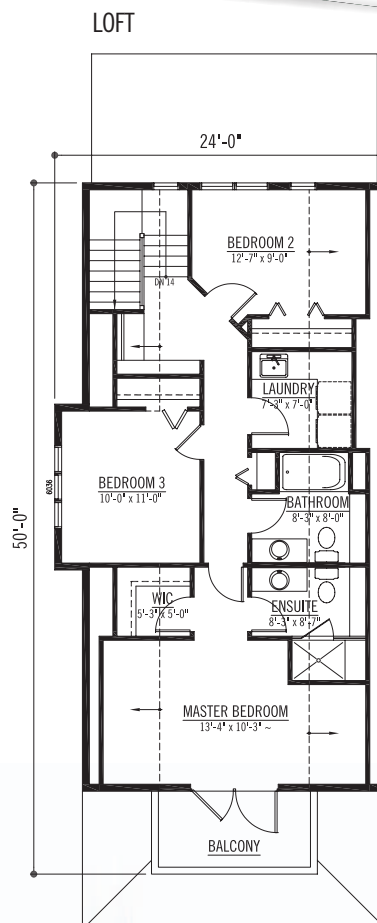
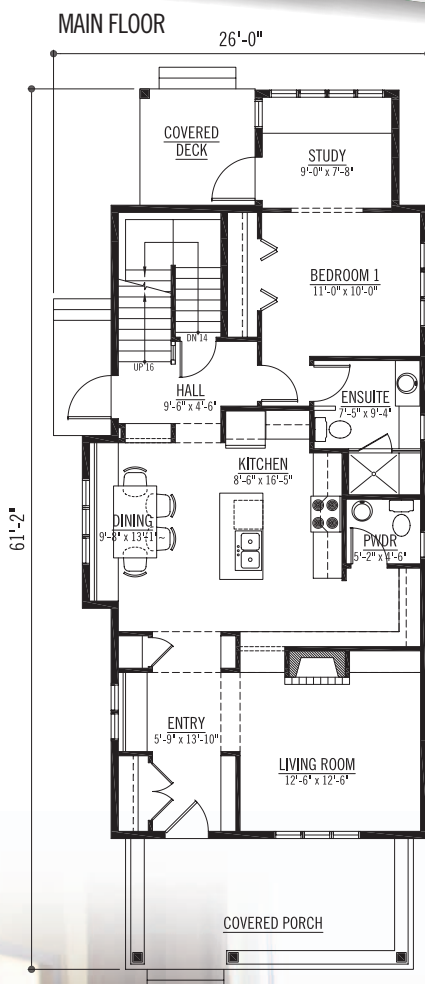


The Dogwood

SQ. FT: 1072 Main
828 Loft
1900 Total

Width: 26'-0"
Depth: 61'-2"

Notes: Available on
crawlspace,
slab-on-grade
or basement.



Contact us today.

PH: 1-888-296-8059
EM: homes@wintonglobal.com
WB: www.wintonglobal.com

2 STOREYS